

DB 20 X4



25
km/h

40
km/h

Also available in 80 km/h version,
made in Germany.

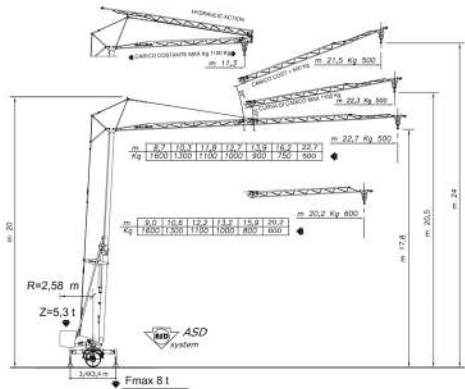
Disponibile anche in versione 80 km/h,
allestita in Germania.

80
km/h

Compliant with German standards

23 m - 500 kg
20 m - 600 kg

DB 20 X4



RADIUS, CAPACITY, REACTIONS

Data Technical Technische data	400 V Three 4 kW			230 V Monophas 4,3 kW			230 V Monophas 3 kW			Rotation Steering ↻	0 - 1 + gpm. ELECTRONIC FINE ADJUST	
	m/rad	kg	HP	m/rad	kg	HP	m/rad	kg	HP		Hydraulic direction Hydraulic direction	HP 1,3
 	4 - 5 + 5	1600		4 - 5 + 5	1600		4 - 5 + 5	1600		 Data electrical Electrical data 50 Hz	 23 F - HP 2 23 F - HP 4,3 40 F - HP 3	
	2nd SPEED POWER 18 ↕ 19	1600	5,0	2nd SPEED POWER 14 ↕ 19	1600	3,7	2nd SPEED POWER 9 ↕ 19	1600	2,5			
	3rd SPEED HIGH 24 ↕ 34	1100	3,0	2nd SPEED HIGH 19 ↕ 18	1100	3,7	3rd SPEED HIGH 13 ↕ 18	1100	2,5			
	20 ↕ 35	700		24 ↕ 28	700		20 ↕ 30	700				
	ELECTRONIC FINE ADJUST			ELECTRONIC FINE ADJUST			ELECTRONIC FINE ADJUST					
	0 - 18	1600	1,1	0 - 18	1600	1,7	0 - 18	1600	1,1			
	0 - 32	1100		0 - 32	1100		0 - 32	1100				
	ELECTRONIC FINE ADJUST			ELECTRONIC FINE ADJUST			ELECTRONIC FINE ADJUST					