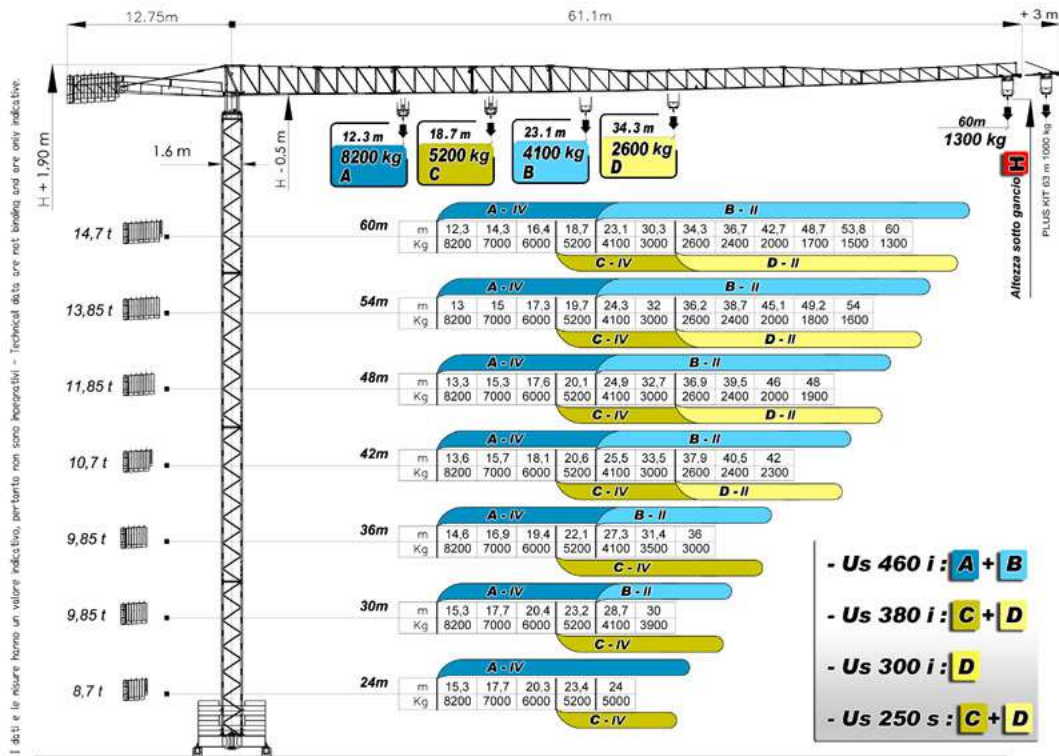


**sky600**  
CRANES



**sky**  
CRANES®





- Us 460 i : **A + B**
- Us 380 i : **C + D**
- Us 300 i : **D**
- Us 250 s : **C + D**

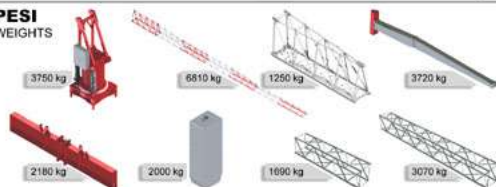
### ALTEZZA SOTTO GANCIO

HEIGHT UNDER HOOK

- H = SGS** = LUNGHEZZA TORRE / MAST COMPOSITION + **2,3 m**
- H = STB** = LUNGHEZZA TORRE / MAST COMPOSITION + **3,4 m**
- H = STB + SCS** = LUNGHEZZA TORRE / MAST COMPOSITION + **3,9 m**

### PESI

WEIGHTS



### COMPOSIZIONE TORRE

MAST COMPOSITION

**ELEMENTI TR / TR ELEMENTS**

L = 6 m TRF - 12 m TRN  
A = B = 1.8 m

COMPOSIZIONI LIBERA / FREE COMPOSITION  
LUNGHEZZA TORRE / MAST HEIGHT  
**12 m >>> 48 m**

**ELEMENTI PR / PR ELEMENTS**

L = 6 m PRF - 12 m PRN  
A = 0.23 m B = 1.45 m  
4 PEZZI / 4 UNITS PACK L x 0,48 x 1,53

COMPOSIZIONI LIBERA / FREE COMPOSITION  
LUNGHEZZA TORRE / MAST HEIGHT  
**12 m >>> 48 m**

**ELEMENTI HRD / HRD ELEMENTS**

L = 4 m  
A = 0.39 m B = 1.59 m  
4 PEZZI / 4 UNITS PACK L x 0,73 x 1,82

COMPOSIZIONI LIBERA / FREE COMPOSITION  
LUNGHEZZA TORRE / MAST HEIGHT  
**12 m >>> 48 m**

**TRA** 9.1 m

**JUMPER**  
SMONTABILE DALLA GRUE SEZIONALE PER TRASPORTO / REMOVABLE AND DISMANTLEABLE FOR TRANSPORT FACILITATION

**SCS ANCORAGGI A FABBRICATO / BUILDING ANCHORAGE**

MAX 5 m

FORMA TORRE: **93 m**

SCS TORRE: **105 m**

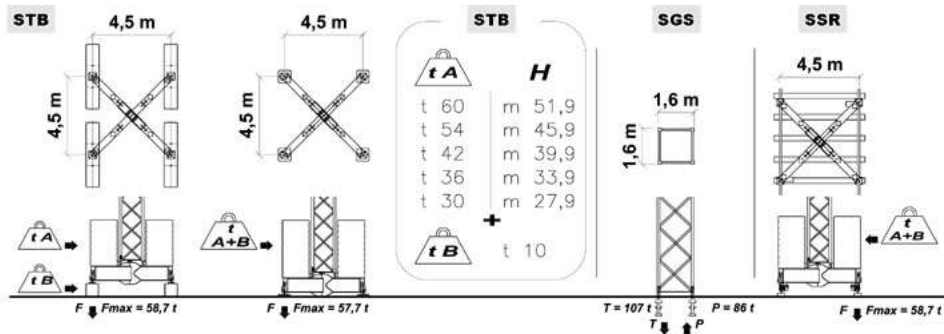
LUNGHEZZA TORRE: MAX JUMPER  
RISOLUZIONE PORTANTE IN CARICO / LOAD REDUCTION IN MAX + LOAD: 200 kg

COMPATIBILE

SISTEMA SOSPENSIONE IDRAULICO / COILING SYSTEM

## SUPPORTI

### GROUND SUPPORTS



## GRUPPO MOTORE

### MOTOR GROUP



### Us 460 i

400 V (+/- 5%) - 50 Hz  
 40 kW  
 Trifase - Threephase

kg	m/min	Hp
0 < • <4100 1	5	
0 < • <4100 2	33	
0 < • <2600 3	50	33
0 < • <2600 4	76 > m/min > 50 VARIOMATIC	

ELECTRONIC FINE ADJUSTMENT

0 < • <8200 1	2.5	
0 < • <8200 2	16.5	
0 < • <5200 3	25	33
0 < • <5200 4	38 > m/min > 25 VARIOMATIC	

ELECTRONIC FINE ADJUSTMENT

kg	m/min	Hp
0 < • <MAX 1	▶▶▶ 8	
0 < • <MAX 2	▶▶▶ 34	7
0 < • <2600 3	▶▶▶ 68	

ELECTRONIC FINE ADJUSTMENT

### Us 380 i

400 V (+/- 5%) - 50 Hz  
 31 kW  
 Trifase - Threephase

kg	m/min	Hp
0 < • <2600 1	5	
0 < • <2600 2	32	25
0 < • <1300 3	56	
0 < • <1300 4	75 > m/min > 56 VARIOMATIC	

ELECTRONIC FINE ADJUSTMENT

0 < • <5200 1	2.5	
0 < • <5200 2	16	
0 < • <2600 3	28	25
0 < • <2600 4	37.5 > m/min > 28 VARIOMATIC	

ELECTRONIC FINE ADJUSTMENT

kg	m/min	Hp
0 < • <MAX 1	▶▶▶ 8	
0 < • <MAX 2	▶▶▶ 26	3
0 < • <2600 3	▶▶▶ 52	

ELECTRONIC FINE ADJUSTMENT

### Us 300 i

400 V (+/- 5%) - 50 Hz  
 24 kW  
 Trifase - Threephase

kg	m/min	Hp
0 < • <2600 1	5	
0 < • <2600 2	22	15
0 < • <1300 3	43	
0 < • <650 4	53 > m/min > 43 VARIOMATIC	

ELECTRONIC FINE ADJUSTMENT

0 < • <5200 1	3	5
0 < • <5200 2	12.5	20
0 < • <2600 3	25	20

ELECTRONIC FINE ADJUSTMENT

kg	m/min	Hp
0 < • <MAX 1	▶▶▶ 8	
0 < • <MAX 2	▶▶▶ 26	3
0 < • <MAX 3	▶▶▶ 52	

ELECTRONIC FINE ADJUSTMENT

### Us 250 s

400 V (+/- 5%) - 50 Hz  
 28 kW  
 Trifase - Threephase

kg	m/min	Hp
0 < • <2600 1	6	5
0 < • <2600 2	25	20
0 < • <1300 3	50	20

ELECTRONIC FINE ADJUSTMENT

0 < • <5200 1	3	5
0 < • <5200 2	12.5	20
0 < • <2600 3	25	20

ELECTRONIC FINE ADJUSTMENT

kg	m/min	Hp
0 < • <MAX 1	25	2
0 < • <MAX 2	50	3

ELECTRONIC FINE ADJUSTMENT

SOLLEVAMENTO HOIST

CARRELLO TROLLEY

ROTAZIONE SLEWING

TRASL. RAIL

rpm	Nm
0	0,3
0,3	0,8
1	2

ELECTRONIC SENSITIVE SLEWING

m/min	Hp
▶▶▶ 12	4 x 3

## TUTOR System

### THE CRANE BRAIN



Sistema optional sulle versioni Us 460 i e Us 380 i. Permette un controllo costante di carico, vento e livello, gestisce le situazioni di allarme e preallarme attraverso i segnali luminosi del semaforo e informazioni trasmesse al monitor in cabina (optional) e al display del radiocomando.

Optional System for Us 460 i and Us 380 i versions that gives a constant control for load, wind and level. It manages the alarm and pre-alarm situations giving information by the light signal, the cabin monitor (optional) and the radio display.



LIGHT SIGNAL

PANEL INSIDE THE CABIN

# sky600

- Possibilità di montare il job completamente assemblato in sito con uso di GMC, torri e argani
- Possibilità di montare il braccio in singoli elementi senza necessità di spazio al suolo
  - Costo di gruppo, argano con pontone fissa (G)
- Versione Tutor con gestione elettronica dei dati di carico, vento, programma e movimento
  - Visualizzazione in monitor o in cabina o al radio Joystick
- Costo di gruppo base con bastimenti level job, installazione o elementi torre allungati
  - Installazione elettronica a controllo remoto per avvicinamenti facili
- Possibility of mounting the job completely assembled on the ground, comprising the ropes, trolley and winches
  - Possibility of mounting the job in single elements without any ground space needed
    - Selection of the winch version, load capacity up to 8.2 t
  - Tutor version with electronic handling of load, wind, program and movement data with visualization on cabin monitor or on radio Joystick
- Selection of the base groups offer with leveling bases, split base/section or embedded tower elements
  - Electronic slewing device with direct movement control for easy approaching

## Sky 600



  [www.grudalbe.it](http://www.grudalbe.it) [info@grudalbe.com](mailto:info@grudalbe.com)



**the crane professionals**

**sky**  
CRANES

**GRU DALBE** s.p.a.  
via Europa, 94 - 21015 Lonate Pozzolo (VA) - Italy  
Tel +39 03 31 66 81 25 r.a.  
Fax +39 03 31 66 87 62  
[info@grudalbe.com](mailto:info@grudalbe.com)

AGBITE DIZIONA

[www.grudalbe.com](http://www.grudalbe.com)

**DB**  
**DALBE**