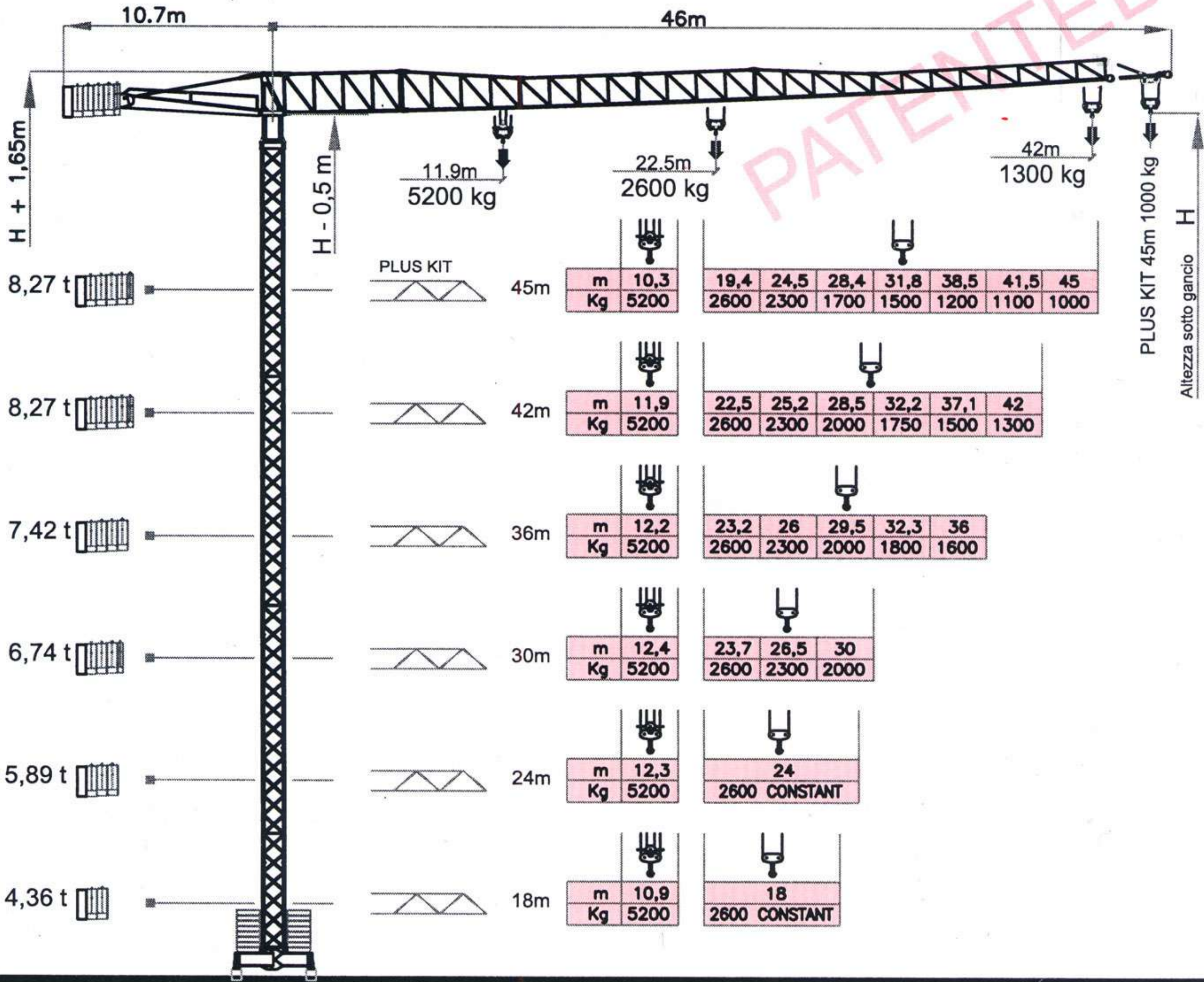


sky 400
CRANES®



sky®
CRANES





PATENTED

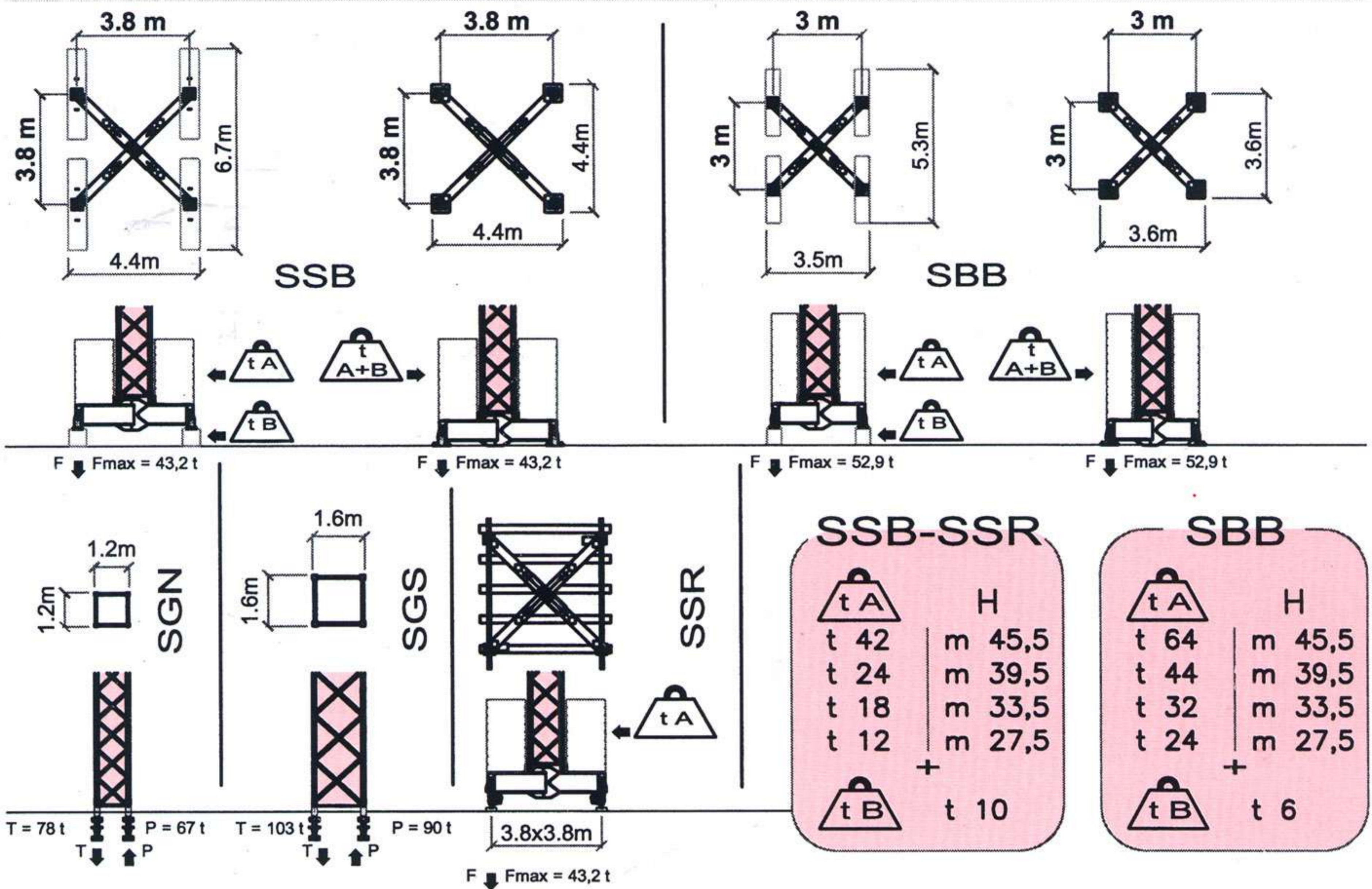
PLUS KIT	45m	42m	36m	30m	24m	18m
m	10,3	11,9	12,2	12,4	12,3	10,9
Kg	5200	5200	5200	5200	5200	5200
	19,4 24,5 28,4 31,8 38,5 41,5 45	22,5 25,2 28,5 32,2 37,1 42	23,2 26 29,5 32,3 36	23,7 26,5 30	24	18
	2600 2300 1700 1500 1200 1100 1000	2600 2300 2000 1750 1500 1300	2600 2300 2000 1800 1600	2600 2300 2000	2600 CONSTANT	2600 CONSTANT

COMPOSIZIONE TORRE

MASTS COMPOSITION

COMPOSIZION MASTIL

	14 m	16 m	18 m	20 m	22 m	24 m	26 m	28 m	30 m	32 m	34 m	36 m	38 m	44 m	51,5 m	57,5 m
H - SGN	14 m	16 m	18 m	20 m	22 m	24 m	26 m	28 m	30 m	32 m	34 m	36 m	38 m	44 m	51,5 m	57,5 m
H - SSB / SBB	14,8 m	16,8 m	18,8 m	20,8 m	22,8 m	24,8 m	26,8 m	28,8 m	30,8 m	32,8 m	34,8 m	36,8 m	38,8 m	44,8 m	H-SGS	
H - SSB / SBB+	15,5 m	17,5 m	19,5 m	21,5 m	23,5 m	25,5 m	27,5 m	29,5 m	31,5 m	33,5 m	35,5 m	37,5 m	39,5 m	45,5 m		
ELEMENTS COMPOSITION	TLN	TLD +TLD +TLF	TLD +TLN	TLF +TLN	TLD +TLD +TLN	TLD +TLF +TLN	TLN +TLN	TLD +TLD +TLF +TLN	TLD +TLN +TLN	TLF +TLN +TLN	TLD +TLD +TLN +TLN	TLD +TLF +TLN +TLN	TLN +TLN +TLN	TLN +TLN +TLN +TNF	TLN +TLN +TLN +JTN +TRN	TLN +TLN +TLN +JTN +TRF +TRN
● = STANDARD	●			●			●			●			●	●		



GRUPPO MOTORE MOTOR GROUP GRUPO MOTOR	US 220 S	US 250 S	US 300 I	US 380 I																																																		
DATI ELETTRICI ELECTRICAL DATA DATOS ELECTRICOS	400 V (+5% -5%) - 50 Hz 22 kW TRIFASE - THREE-PHASE	400 V (+5% -5%) - 50 Hz 27 kW TRIFASE - THREE-PHASE	400 V (+5% -5%) - 50 Hz 23 kW TRIFASE - THREE-PHASE	400 V (+5% -5%) - 50 Hz 31 kW TRIFASE - THREE-PHASE																																																		
SOLLEVAMENTO HOISTING ELEVACIÓN	<table border="1"> <tr><th>m/min.</th><th>kg.</th><th>kW</th></tr> <tr><td>5</td><td>2600</td><td>2,2</td></tr> <tr><td>21</td><td>2600</td><td>8,8</td></tr> <tr><td>42</td><td>1300</td><td>10,3</td></tr> </table>	m/min.	kg.	kW	5	2600	2,2	21	2600	8,8	42	1300	10,3	<table border="1"> <tr><th>m/min.</th><th>kg.</th><th>kW</th></tr> <tr><td>6</td><td>2600</td><td>3,7</td></tr> <tr><td>25</td><td>2600</td><td>14,7</td></tr> <tr><td>50</td><td>1300</td><td>14,7</td></tr> </table>	m/min.	kg.	kW	6	2600	3,7	25	2600	14,7	50	1300	14,7	<table border="1"> <tr><th>m/min.</th><th>kg.</th><th>kW</th></tr> <tr><td>5</td><td>2600</td><td rowspan="5">11</td></tr> <tr><td>23</td><td>2600</td></tr> <tr><td>44</td><td>1300</td></tr> <tr><td>52</td><td>650</td></tr> <tr><td></td><td></td></tr> </table>	m/min.	kg.	kW	5	2600	11	23	2600	44	1300	52	650			<table border="1"> <tr><th>m/min.</th><th>kg.</th><th>kW</th></tr> <tr><td>7</td><td>2600</td><td rowspan="4">18</td></tr> <tr><td>32</td><td>2600</td></tr> <tr><td>62</td><td>1300</td></tr> <tr><td>76</td><td>650</td></tr> </table>	m/min.	kg.	kW	7	2600	18	32	2600	62	1300	76	650
m/min.	kg.	kW																																																				
5	2600	2,2																																																				
21	2600	8,8																																																				
42	1300	10,3																																																				
m/min.	kg.	kW																																																				
6	2600	3,7																																																				
25	2600	14,7																																																				
50	1300	14,7																																																				
m/min.	kg.	kW																																																				
5	2600	11																																																				
23	2600																																																					
44	1300																																																					
52	650																																																					
m/min.	kg.	kW																																																				
7	2600	18																																																				
32	2600																																																					
62	1300																																																					
76	650																																																					
CARRELLO TROLLEY DISTRIBUCIÓN	<table border="1"> <tr><th>m/min.</th><th>kg.</th><th>kW</th></tr> <tr><td>21</td><td>1,5</td><td rowspan="2">2,2</td></tr> <tr><td>42</td><td>2,2</td></tr> </table>	m/min.	kg.	kW	21	1,5	2,2	42	2,2	<table border="1"> <tr><th>m/min.</th><th>kg.</th><th>kW</th></tr> <tr><td>21</td><td>1,5</td><td rowspan="2">2,2</td></tr> <tr><td>42</td><td>2,2</td></tr> </table>	m/min.	kg.	kW	21	1,5	2,2	42	2,2	<table border="1"> <tr><th>m/min.</th><th>kg.</th><th>kW</th></tr> <tr><td>10</td><td rowspan="3">2,2</td><td rowspan="3">2,2</td></tr> <tr><td>26</td></tr> <tr><td>50</td></tr> </table>	m/min.	kg.	kW	10	2,2	2,2	26	50	<table border="1"> <tr><th>m/min.</th><th>kg.</th><th>kW</th></tr> <tr><td>10</td><td rowspan="3">2,2</td><td rowspan="3">2,2</td></tr> <tr><td>26</td></tr> <tr><td>50</td></tr> </table>	m/min.	kg.	kW	10	2,2	2,2	26	50																		
m/min.	kg.	kW																																																				
21	1,5	2,2																																																				
42	2,2																																																					
m/min.	kg.	kW																																																				
21	1,5	2,2																																																				
42	2,2																																																					
m/min.	kg.	kW																																																				
10	2,2	2,2																																																				
26																																																						
50																																																						
m/min.	kg.	kW																																																				
10	2,2	2,2																																																				
26																																																						
50																																																						
ROTAZIONE SLEWING ORIENTACIÓN	0,3 - 0,9 rpm ELECTRONIC SENSITIVE SLEWING			55 Nm																																																		
TRASLAZIONE RAIL CARRIL	17.0 m/min.			2 x 2,2 kW																																																		



sky.400
CRANES

- Montaggio con autogru di ridotte dimensioni, peso dei pezzi scomponibile per esigenze di trasporto fino a 2,4 t
- Possibilità di montaggio braccio completamente assemblato a terra completo di funi, carrello e argani
 - Possibilità di montaggio braccio a singoli elementi senza necessità di spazio al suolo
- Scelta di gruppi argano con o senza inverter e tiro in 4° taglia con raddoppio della portata
 - Scelta di gruppi base con basamenti autolivellanti o elementi torre annegati
 - Rotazione elettronica a controllo diretto per accostamenti facilitati
 - Grande altezza utile con gru libera da ancoraggi
 - Zincatura torre e controfreccia di serie
- Mounting by means of a small dimensions truck crane, disassembling of crane groups not exceeding 2,4 t
- Possibility of mounting the jib completely assembled on the ground, comprising the ropes, trolley and winches
 - Possibility of mounting the jib in single elements without any ground space needed
- Selection of the winch version with or without frequency inverter and 4-part reeving, doubling the load capacity
 - Selection of the base groups either with self-levelling bases or embedded tower elements
 - Electronic slewing device with direct movement control for easy approaching
 - Great useful height with crane free from anchoring
 - Galvanization for tower elements and counterjib as a standard

Sky 400



MACCHINA COSTRUITA IN ITALIA CON MATERIALI E COMPONENTI EUROPEI



the crane professionals

sky
CRANES

www.grudalbe.com

GRU DALBE srl

via Europa, 84 - 21015 Lonate P. - VA - Italy

Tel +39 03 31 66 84 25 r.a.

Fax +39 03 31 66 87 62

db@grudalbe.com

AGENTE DI ZONA

DB
DALBE