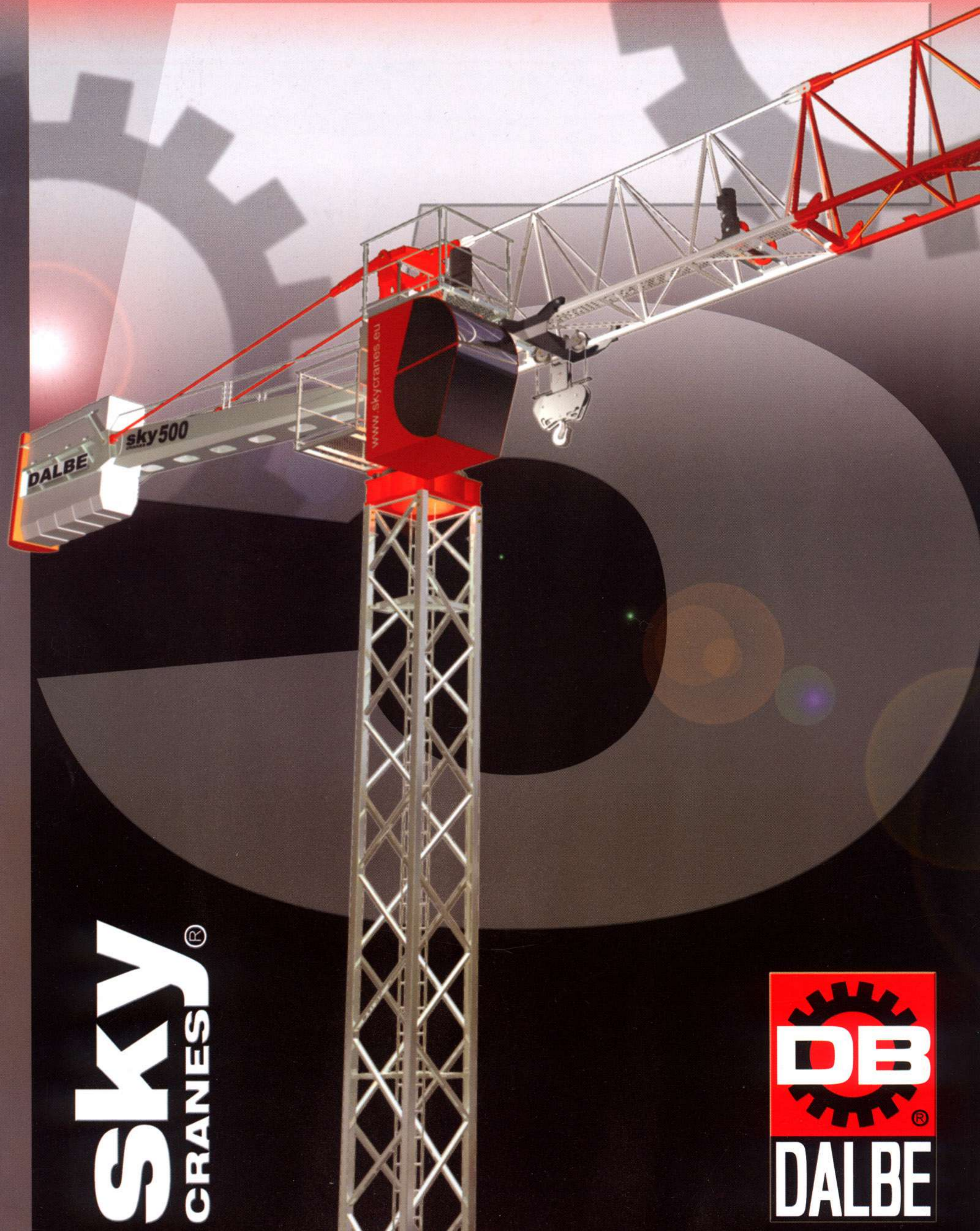


**sky500**  
CRANES



**sky**  
CRANES®

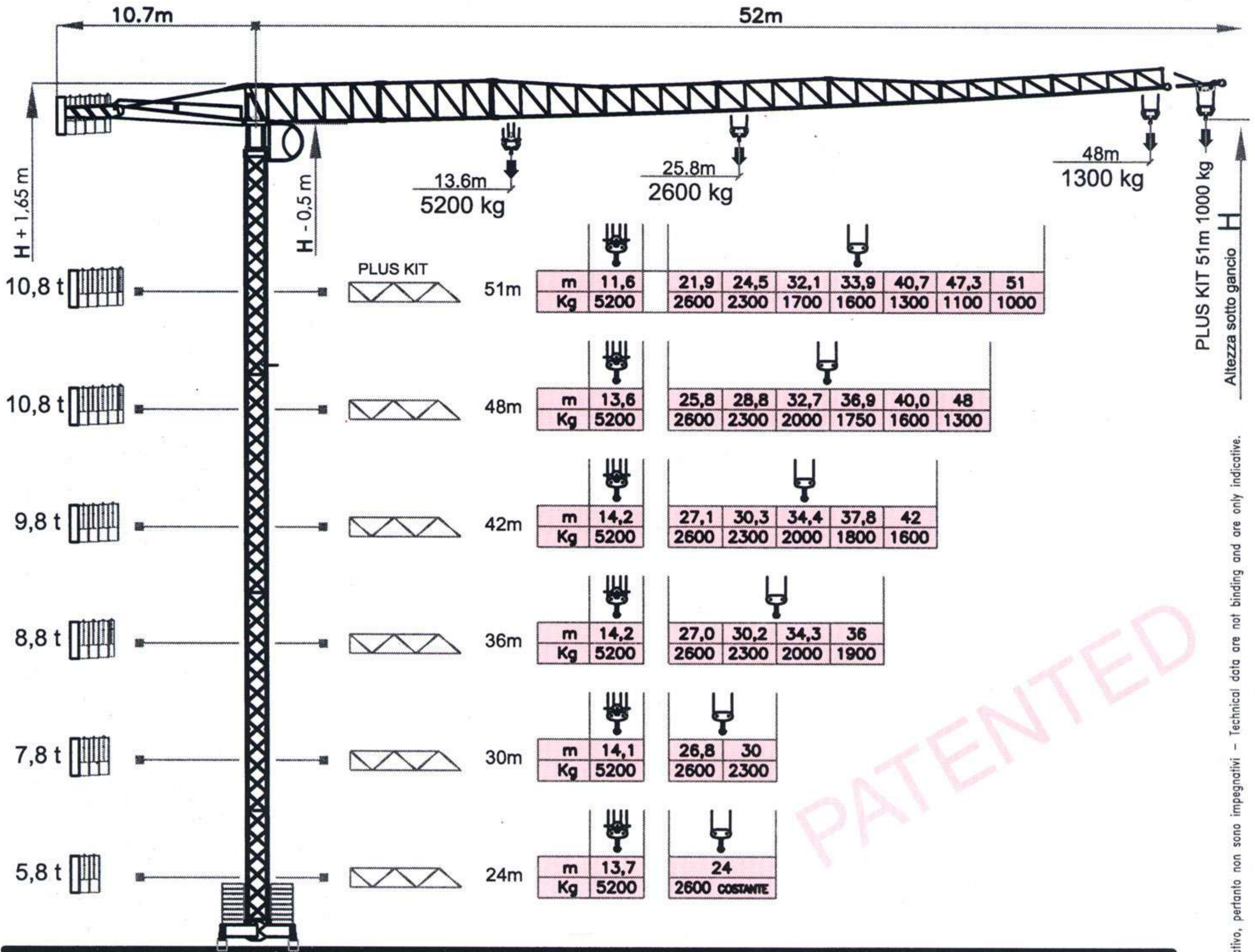




# sky500

CRANES®

48 m - 1300 kg  
PLUS KIT 51 m - 1000 kg



PATENTED

COMPOSIZIONE TORRE

MASTS COMPOSITION

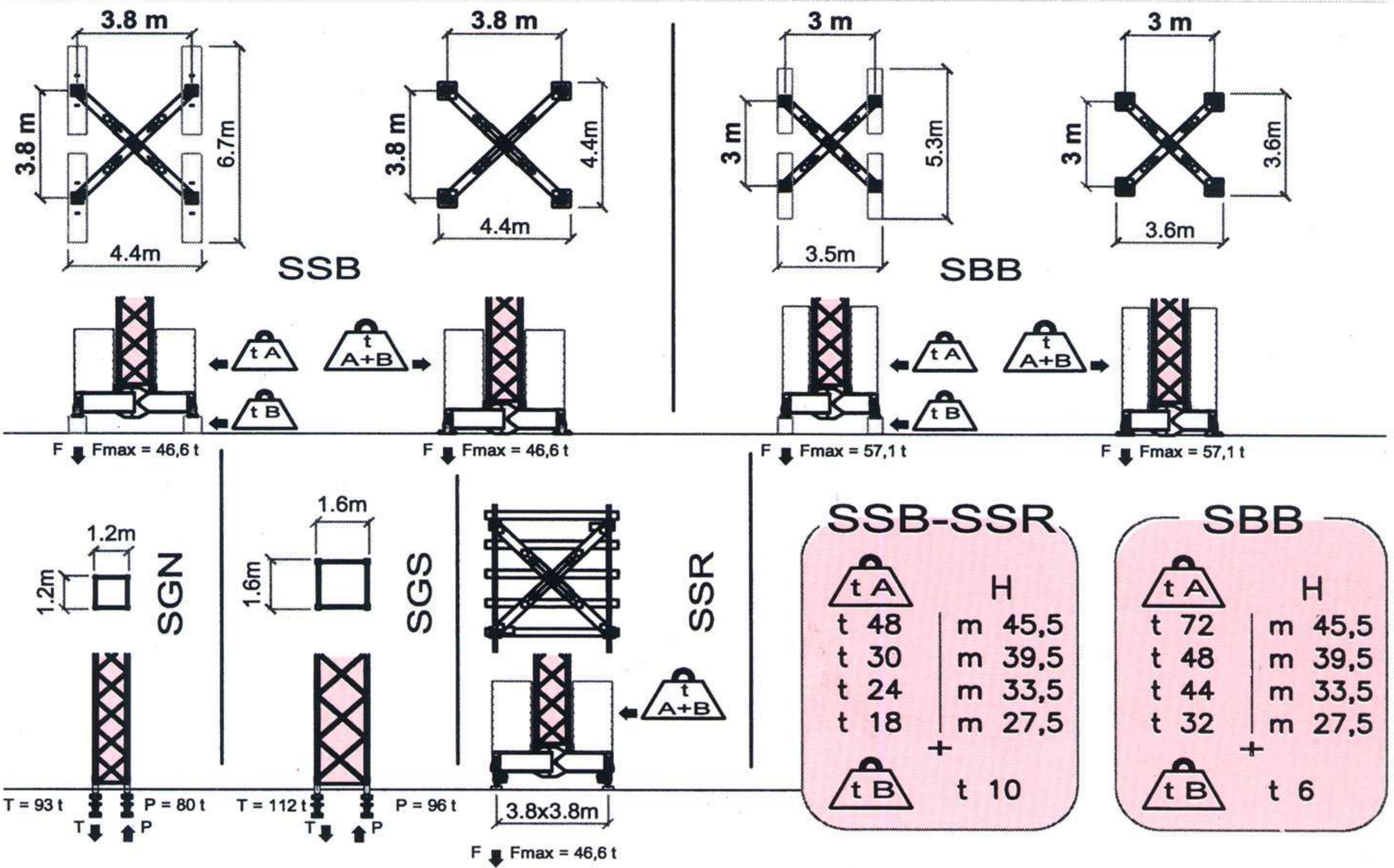
COMPOSICION MASTIL

Configuration	14m	16m	18m	20m	22m	24m	26m	28m	30m	32m	34m	36m	38m	44m	51,5m	57,5m
H - SGN																
H - SSB / SBB																
H - SSB / SBB+																
ELEMENTS COMPOSITION	TNN	TND +TND +TNF	TND +TNN	TNF +TNN	TND +TND +TNN	TND +TNF +TNN	TNN +TNN	TND +TND +TNF +TNN	TND +TNN +TNN	TNF +TNN +TNN	TND +TND +TNN +TNN	TND +TNF +TNN +TNN	TNN +TNN +TNN	TNN +TNN +TPF	TNN +TNN +TNN +JTN +TRN	TNN +TNN +TNN +JTN +TRN

FEM 1.001-A3



I dati e le misure hanno un valore indicativo, pertanto non sono impegnativi - Technical data are not binding and are only indicative.



GRUPPO MOTORE MOTOR GROUP GRUPO MOTOR	US 220 S	US 250 S	US 300 I	US 380 I																																						
<b>DATI ELETTRICI</b> ELECTRICAL DATA DATOS ELECTRICOS	400 V (+5% -5%) - 50 Hz 22 kW TRIFASE - THREE-PHASE	400 V (+5% -5%) - 50 Hz 27 kW TRIFASE - THREE-PHASE	400 V (+5% -5%) - 50 Hz 23 kW TRIFASE - THREE-PHASE	400 V (+5% -5%) - 50 Hz 31 kW TRIFASE - THREE-PHASE																																						
<b>SOLLEVAMENTO</b> HOISTING ELEVACIÓN	<table border="1"> <tr><td>5</td><td>2600</td><td>2,2</td></tr> <tr><td>21</td><td>2600</td><td>8,8</td></tr> <tr><td>42</td><td>1300</td><td>10,3</td></tr> </table>	5	2600	2,2	21	2600	8,8	42	1300	10,3	<table border="1"> <tr><td>6</td><td>2600</td><td>3,7</td></tr> <tr><td>25</td><td>2600</td><td>14,7</td></tr> <tr><td>50</td><td>1300</td><td>14,7</td></tr> </table>	6	2600	3,7	25	2600	14,7	50	1300	14,7	<table border="1"> <tr><td>5</td><td>2600</td><td rowspan="5">11</td></tr> <tr><td>23</td><td>2600</td></tr> <tr><td>44</td><td>1300</td></tr> <tr><td>52</td><td>650</td></tr> <tr><td>52</td><td>650</td></tr> </table>	5	2600	11	23	2600	44	1300	52	650	52	650	<table border="1"> <tr><td>7</td><td>2600</td><td rowspan="4">18</td></tr> <tr><td>32</td><td>2600</td></tr> <tr><td>62</td><td>1300</td></tr> <tr><td>76</td><td>650</td></tr> </table>	7	2600	18	32	2600	62	1300	76	650
5	2600	2,2																																								
21	2600	8,8																																								
42	1300	10,3																																								
6	2600	3,7																																								
25	2600	14,7																																								
50	1300	14,7																																								
5	2600	11																																								
23	2600																																									
44	1300																																									
52	650																																									
52	650																																									
7	2600	18																																								
32	2600																																									
62	1300																																									
76	650																																									
<b>CARRELLO</b> TROLLEY DISTRIBUCIÓN	<table border="1"> <tr><td>21</td><td>1,5</td></tr> <tr><td>42</td><td>2,2</td></tr> </table>	21	1,5	42	2,2	<table border="1"> <tr><td>21</td><td>1,5</td></tr> <tr><td>42</td><td>2,2</td></tr> </table>	21	1,5	42	2,2	<table border="1"> <tr><td>10</td><td rowspan="3">2,2</td></tr> <tr><td>26</td></tr> <tr><td>50</td></tr> </table>	10	2,2	26	50	<table border="1"> <tr><td>10</td><td rowspan="3">2,2</td></tr> <tr><td>26</td></tr> <tr><td>50</td></tr> </table>	10	2,2	26	50																						
21	1,5																																									
42	2,2																																									
21	1,5																																									
42	2,2																																									
10	2,2																																									
26																																										
50																																										
10	2,2																																									
26																																										
50																																										
<b>ROTAZIONE</b> SLEWING ORIENTACIÓN	0,3 - 0,9 rpm ELECTRONIC SENSITIVE SLEWING			2 x 55 Nm																																						
<b>TRASLAZIONE</b> RAIL CARRIL	17.0 m/min.			2 x 2,2 kW																																						

# sky500 CRANES

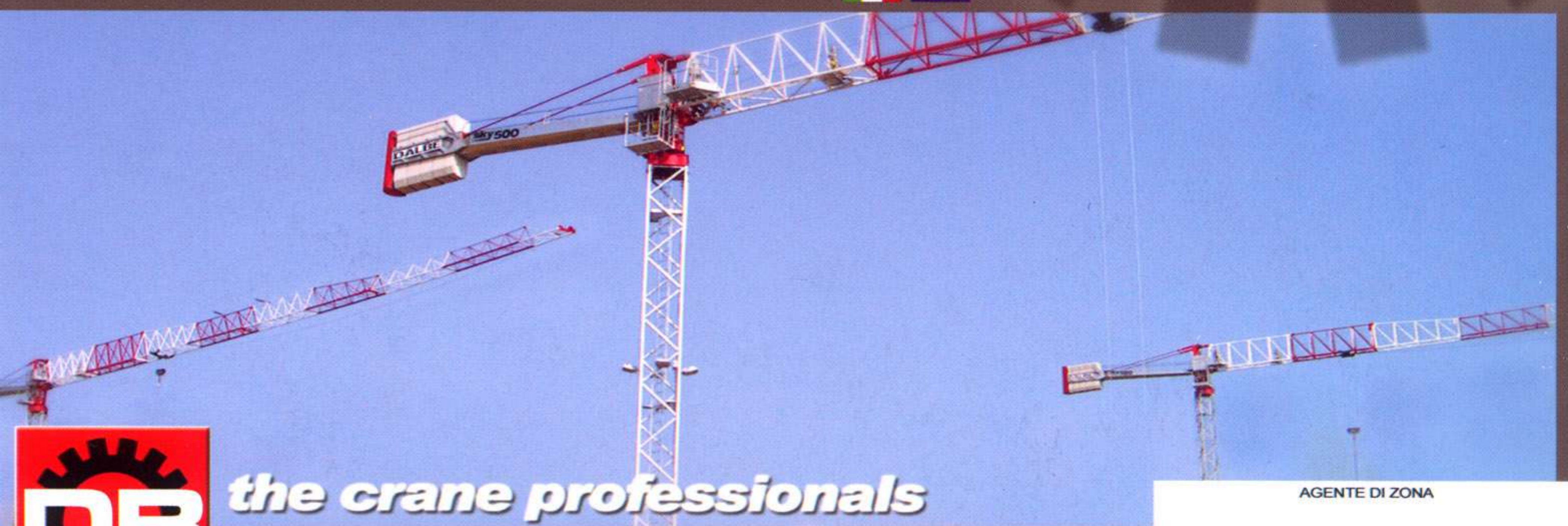
- Montaggio con autogru di ridotte dimensioni, peso dei pezzi scomponibile per esigenze di trasporto fino a 2,4 t
- Possibilità di montaggio braccio completamente assemblato a terra completo di funi, carrello e argani
- Possibilità di montaggio braccio a singoli elementi senza necessità di spazio al suolo
- Scelta di gruppi argano con o senza inverter e tiro in 4° taglia con raddoppio della portata
- Scelta di gruppi base con basamenti autolivellanti o elementi torre annegati
- Rotazione elettronica a controllo diretto per accostamenti facilitati
- Grande altezza utile con gru libera da ancoraggi
- Zincatura torre e controfrecce di serie

- Mounting by means of a small dimensions truck crane, disassembling of crane groups not exceeding 2,4 t
- Possibility of mounting the jib completely assembled on the ground, comprising the ropes, trolley and winches
- Possibility of mounting the jib in single elements without any ground space needed
- Selection of the winch version with or without frequency inverter and 4-part reeving, doubling the load capacity
- Selection of the base groups either with self-levelling bases or embedded tower elements
- Electronic slewing device with direct movement control for easy approaching
- Great useful height with crane free from anchoring
- Galvanization for tower elements and counterjib as a standard

Sky 500



MACCHINA COSTRUITA IN ITALIA CON MATERIALI E COMPONENTI EUROPEI



*the crane professionals*



**sky**  
CRANES

[www.grudalbe.com](http://www.grudalbe.com)

**GRU DALBE srl**

via Europa, 84 - 21015 Lonate P. - VA - Italy

Tel +39 03 31 66 84 25 r.a.

Fax +39 03 31 66 87 62

[db@grudalbe.com](mailto:db@grudalbe.com)

AGENTE DI ZONA